

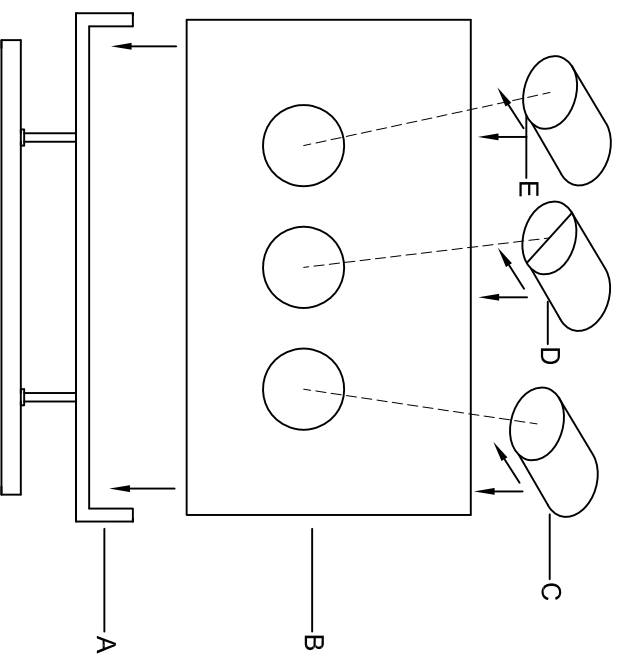
REVELATION

by UTTERMOST

Assembly Instruction

STYLE NO:R17929

1. Take the parts carefully out of the carton, and place it on a flat surface, make sure that the parts will not be damaged.
2. Place the Clear K9 (B) into the saddle (A) as illustrated.
3. Insert the cylinder Clear K9(C) /cylinder Clear K9(E) and cylinder stone(D) into the Clear K9 (B).



REVELATION

by UTTERMOST

Assembly Instruction

STYLE NO:R17929

1. Take the parts carefully out of the carton, and place it on a flat surface, make sure that the parts will not be damaged.
2. Place the Clear K9 (B) into the saddle (A) as illustrated.
3. Insert the cylinder Clear K9(C) /cylinder Clear K9(E) and cylinder stone(D) into the Clear K9 (B).

